

Spring 2005

Wave Hill Exhibition Schedule

Out of Bounds

March 5-May 30 | reception April 10, 1-4:30
Glyndor Gallery

Amy Chan, Yvonne Estrada, Jeffrey Gibson,
Ulrike Heydenreich, Geraldine Lau, Lucas Monaco,
Hilda Shen, Vargas-Suarez Universal, Amy Yoes

Nine artists create wall drawings and installations that engage the distinctive interior spaces and vistas of Glyndor House, to take the notion of landscape beyond the frame. The experience of Wave Hill, a 28-acre public garden, and its relationship to the Hudson Valley, the Bronx, and all of New York City is the starting point for artists who begin with specific places, but employ distinct methods of abstraction. Working directly with Glyndor Gallery's Georgian Revival interior, the artists offer a fresh view of a traditional subject.



Previews of works-in-progress can be scheduled
beginning February 1 by calling 718.549.3200 x232.

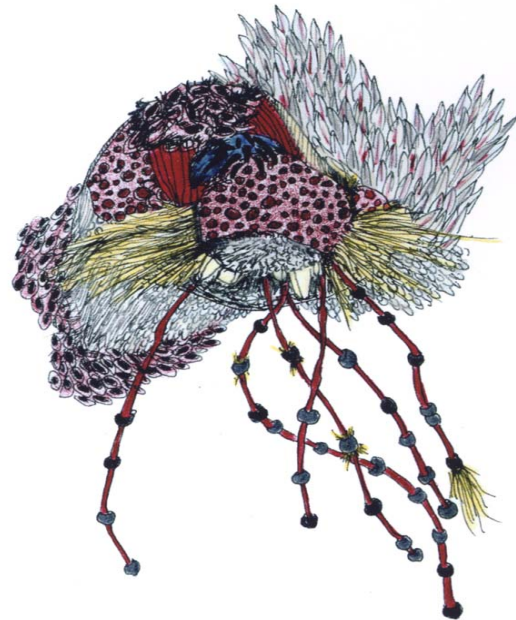
Jeffrey Gibson
Infinite Anomaly 23 - The Indivisible Polybreed, (detail), 2004
paint, sculptural element, silicone, 9' x 25'

Pattie Lee Becker, Drawings

March 8-June 5 | meet the artist March 13, 2-4
Wave Hill House Gallery

Pattie Lee Becker creates drawings of invented hybrid plants using ink and colored pencil. Taking her current method of working into a more active, outdoor-observational context, Becker is using Wave Hill's gardens and greenhouses to develop a new body of nature related work inspired by the plants growing here.

Pattie Lee Becker
One of His Masks, 2003
ink and colored pencil, 6 1/4" x 6 1/4"



Curator Jennifer McGregor

Press Contact Julia Waters 718.549.3200 x232 / pressroom@wavehill.org

West 249 St and Independence Ave Bronx, New York 10471 / www.wavehill.org

A public garden & cultural center

The Arts at Wave Hill are sponsored by  TARGET